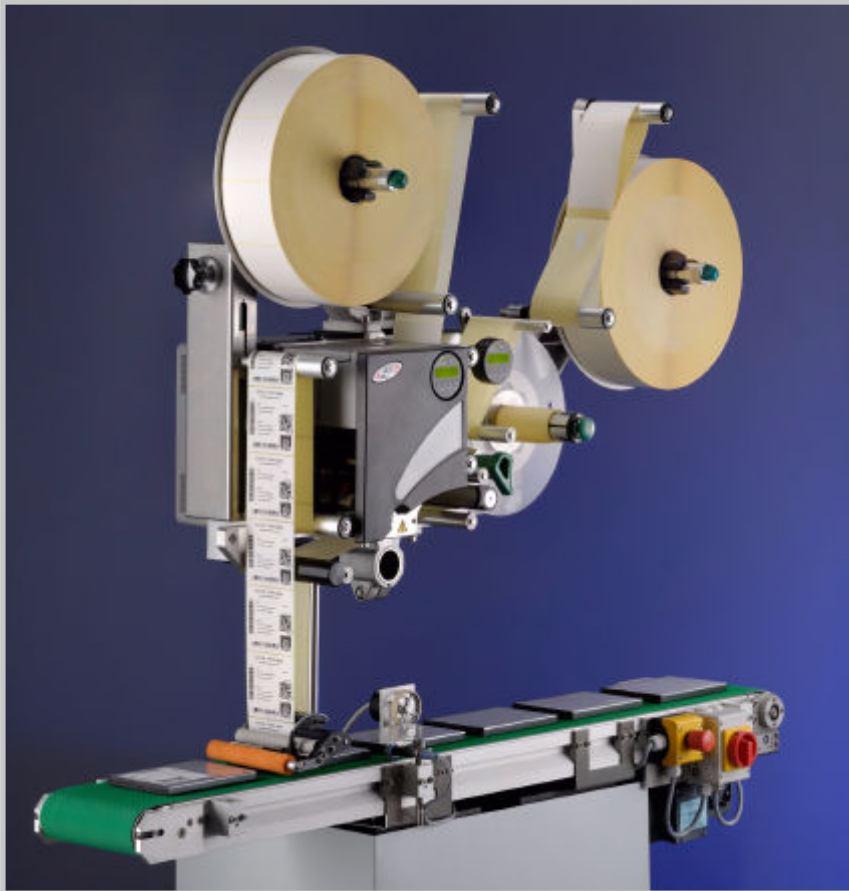


PRINT & APPLY LABELLING SYSTEM

SPA73X SERIES

Print & Apply systems for high
demand production lines



High volume requirements need a powerful, efficient and reliable Print & Apply solution. Built for heavy industrial use, the SPA73x series meets those needs with accuracy and speed.

The SPA73x series high volume print & apply labelling system will seamlessly fit into your production environment.

Annual costs are up to 50% lower compared to competitive solutions.

It is highly reliable and can help reduce downtime in production.



SESSIONS UK

SELF ADHESIVE

LABELLING

SOLUTIONS

Benefits at a glance:-

reduces down time in production - large label and ribbon rolls, modular parts for quick maintenance, easy-to-use controls and user friendly features

enhances productivity with high print and apply speed and output of up to 400 labels/min*

reduces consumable costs with a ribbon save function

highly reliable, 24/7: high quality parts ensure a long lifetime and low maintenance. The proven firmware is sure to avoid downtime

very flexible - modular concept and standard interfaces for easy integration in all types of network. The mounting options ensure a good fit even when space is limited

For further information visit our web site www.sessionsuk.com

**Top of the range -
Powerful and versatile**



The **SPA73x** series print & apply labelling machine is perfectly suitable for integration into your existing and new production lines or for stand alone applications. It is suitable for many industries including retail supply chain, chemical, pharmaceutical and food.



Food



Highly Automated Production Lines



Beverage



Pharmaceutical



Distribution Centres



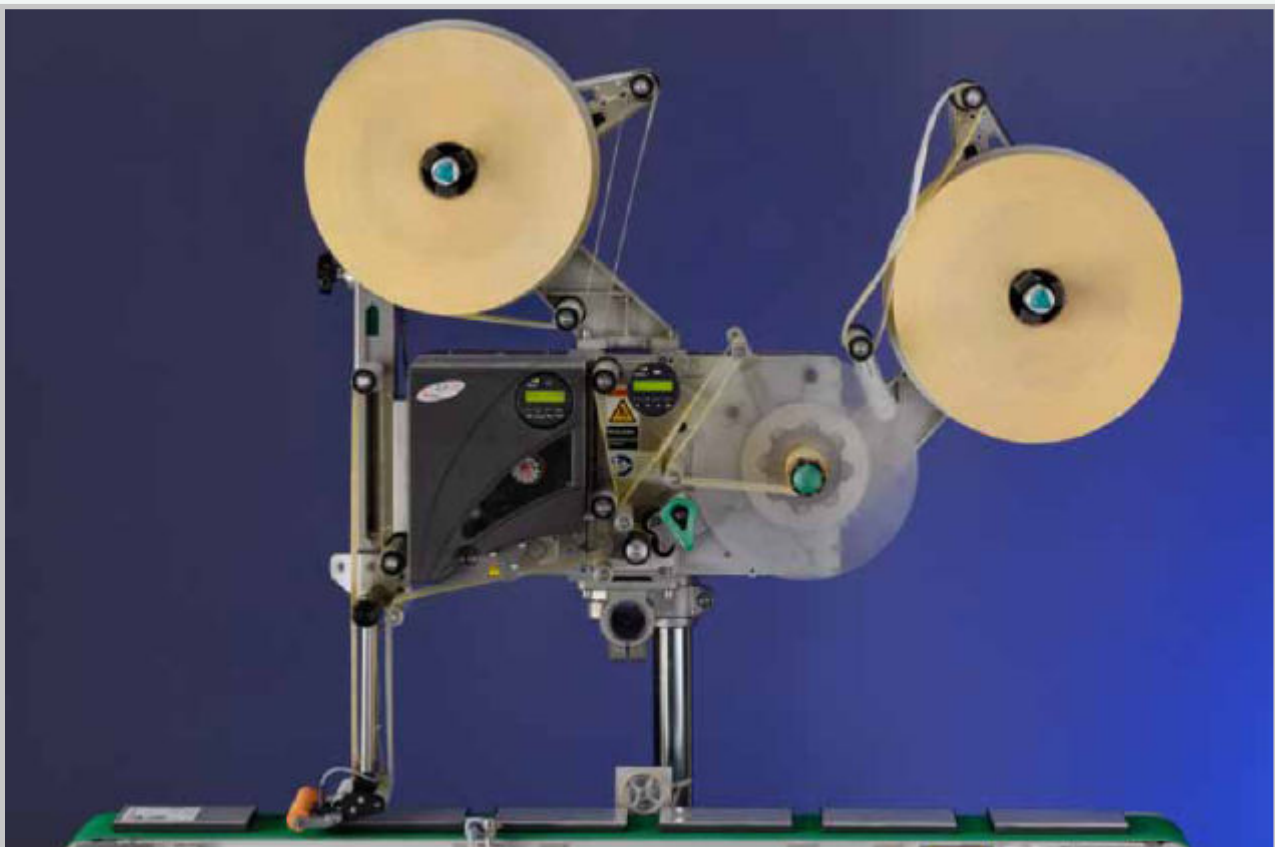
Cosmetics



Retail & Logistics



Logistics



A second label roll unwinder allows quick roll changes and less downtime

The perfect fit - features and benefits

The SPA73x series offers you more added value than any Print & Apply system ever before:

High print and apply speed

Fast output of up to 400 labels/min* - especially beneficial for single items, boxes and trays in automated production lines in any industry.

Large label and ribbon rolls

With a roll diameter of 400 mm for labels and up to 1000 M for ribbon rolls, you will profit from fewer roll changes and consequently less downtime in your production line.

Three print widths

Choose between 4", 5" and 6" - select the best solution to fit your application.

Standard interfaces

Gain flexibility in highly automated environments with the SPA73x. The standard interfaces enable seamless connection to many types of networks and control devices.

Mounting option

With the multiple mounting options, the SPA73x allows easy and flexible integration, even when space is limited. Ready for both top and side labelling.

Modularity

For service and maintenance, just exchange the print or apply module. These modules can be changed quickly keeping downtime to a minimum.

Second unwinder module

With a second unwinder, label rolls can be switched during operation - this means even less downtime in production lines that cannot afford interruption.



1000 M ribbon rolls improves operational and cost efficiency

* Depending on application and label size

Technical Specification

Printer specifications:		SPA734 / 735	SPA736
Printing technology	Thermal transfer / direct thermal		
Print head	300 dpi near edge print head		
Print speed	50 mm - 400 mm/s		
Print width	SPA734 max. 104 mm, SPA735 max. 127 mm	Max. 160 mm	
Ribbon width	20 mm - 140 mm	20 mm - 160 mm	
Ribbon length	Up to 1000 M; max. roll diameter 110 mm		
Ribbon save function	Standard		
Printable barcodes	1-dimensional, 2-dimensional, GS1 Databar & CC barcodes		
Standard fonts	17 fonts including OCR-A and OCR-B, 3 scalable fonts, (speedo), TrueType® font (also unicoded) supported		
Font magnification	Rotation by 0°, 90°, 180° and 270°. Up to factor 16 scaling in X/Y direction		
Data interfaces	Ethernet, 2 x USB A / 1 x USB-B, RS232 (Sub D9), CF/SD card slot		
Real time clock	Standard		
Display	5 key control panel with illuminated graphical display, 128x32 dots with 2 lines of 16 characters		
Memory	64 MB RAM		
Graphic formats	BMP, PCX, JPG, TIF, GIF, Easy Plug Logos		
Labeller specifications:		SPA734 / 735	SPA736
Dispensing speed	Up to 50 m/min		
Label output	Up to 400 labels/min. (at label length < 40 mm)		
Label stop position on peel edge	Constant apply speed < ± 0.5 mm, variable apply speed < ± 1 mm		
Data interfaces	Ethernet, USB, 1 x Device (USB-B), RS232 (Sub D9), Compact Flash card slot		
Signal interfaces	Output, 4x, PNP, 24V, Input 3x, PNP, 24V		
Display	5 key control panel with illuminated graphical display, 128x32 dots with 2 lines of 16 characters		
Accessories/upgrade options	PLC In/Out on M12 connectors, unwinder + holder for 300 mm or 400 mm label roll OD, dispensing edges, internal/external OD kit, applicator interface, applicators LA-BO / LA-TO, remote display, APSF encoder kit		
Material specifications:		SPA734 / 735	SPA736
Material	Converted, self-adhesive label material with liner, on rolls. plastic film material (e.g. PE, PP, PA, PVC)	Paper, thermal transfer, thermal direct,	
Label width*	30 mm to 134 mm	30 mm to 185 mm	
Label length	25 mm to 225 mm - up to 440 mm after elongation dispense edge fixture		
Core diameter	38 mm, 76 mm, 102 mm		
Roll diameter	300 mm or 400 mm		
* Recommendation: for applications at variable apply speed, the minimum label width should be > 45 mm, to enable the defined label stop accuracy.			



SESSIONSUK

1 Redeness Street, YORK, YO31 7UU

Tel: + 44(0) 1904 6 106 13

Fax: + 44(0) 1904 638518

Email: enquiry@sessionsuk.com Web: www.sessionsuk.com